

PROCTORWRAP®

user guide

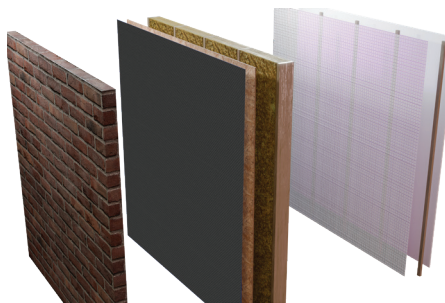
PROCTORWRAP DETAILS

General

Proctorwrap is a flexible three layer polypropylene material developed primarily as a breather membrane for use in timber frame wall and light steel frame applications.

Applied in the factory during manufacture or on site, Proctorwrap, affords effective protection of timber frames during construction against wind-driven rain, snow and dust. Once completed, the high water vapour permeability of Proctorwrap allows the controlled escape of vapour from within the timber frame whilst restricting the ingress of rain and moisture.

Proctorwrap conforms to the Construction Products Regulation (EU Regulation No. 305/2011), Underlay for walls (Annex ZA of EN 13859-2). Its vapour resistance factor of 0.1MNs/g is less than the maximum permitted in NHBC requirements. Used in accordance with this NHBC Practice Note, Proctorwrap provides a quality permanent wall breather membrane.



Wall Breather Membrane

Installed in accordance with our installation guide, Proctorwrap is suitable to provide protection to timber frame buildings and can satisfy the guidance provided in STA Advice Note 18.

Revised: July 2025

Version: 1.004

Next review due: July 2026

PRODUCT CHARACTERISTICS

Mass per unit area (EN 1849-2)	100g/m ²
Reaction to Fire (EN 13501-1)	Class E
Water vapour resistance Sd (EN 12572)	0.02m
Water penetration (EN 1928)	
Before ageing:	Class W1
After ageing:	Class W1
Tensile strength (EN 12311-1)	
Before ageing:	MD 240N CD 125N
After ageing:	MD 200N CD 110N
Elongation (EN 12311-1)	
Before ageing:	MD 60% CD 70%
After ageing:	MD 50% CD 90%
Tear resistance (EN 12310-1)	MD 100N CD 125N
Flexibility at low temperature (EN 1109)	No cracking at minus ≥40°C

Application Details

Supplied in roll form, Proctorwrap should be fixed to frames with austenitic stainless steel nails or staples at centres not more than 500mm. On areas where sheets are required to be lapped, the following dimensions must be adhered to:

Vertical Laps	–	not less than 150mm
Horizontal laps	–	not less than 100mm

Ensure integrity of Proctorwrap by overlapping upper layers over lower layers and staggering vertical joints. Protect timber at wall plate level and mark stud positions for wall fixings. Once applied to the wall, Proctorwrap should be covered within 3 months.

Application Procedure

Proctorwrap must be installed in accordance with the A. Proctor Group's instructions.



PROCTORWRAP CHARACTERISTICS

Thickness	0.4mm
Weight	100g/m ²
Roll Length	100m
Roll Width	1.35 (grey only) or 2.7m
Colour	Blue/Grey Others Available

Quality control checks on the finished product include:

- Weight
- Tensile strength and elongation
- Tear
- Water penetration

The contents of this installation guide are provided by A. Proctor Group Limited (APG) in good faith for general information purposes only. The statements and data contained in this guide are not specific technical recommendations as to any particular design or application. APG give no warranty and accept no liability for its contents and the ultimate determination as to product suitability is the sole responsibility of the installer or end user. APG strongly recommends following the installation guidelines and the relevant Codes of Practice which are correct at the time of publication and results may vary depending on the particular design and/or application.



TECHNICAL ADVICE

The A. Proctor Group has a dedicated Technical Department which can deal with installation details, view drawings for approval and give specialist advice on the correct use of the A. Proctor Group products.

Telephone: +44 (0) 1250 872261

Facsimile: +44 (0) 1250 872727

email: contact@proctorgroup.com

www.proctorgroup.com

AIRTIGHTNESS
FIRE SOLUTIONS
ACOUSTIC SOLUTIONS
CONDENSATION CONTROL
THERMAL SOLUTIONS
GROUND GAS PROTECTION