

PROCHECK® A2

user guide



PROCHECK A2

Procheck A2 air and vapour tight membrane improves energy efficiency and reduces the risk of condensation. Procheck A2 is a laminated glass fibre and foil composite protected by a clear lacquer. This clear coating gives the membrane the additional benefit of a low emissivity surface which, when used with a service cavity, can enhance the overall thermal performance of the construction, as well as providing a reaction to fire classification to A2 - s1, d0.

- Reaction to fire classification to A2 - s1, d0
- Water vapour diffusion tight
- Low emissivity surface <0.05
- Reinforced to withstand tough site conditions

Installation of Procheck A2

Attention to Detail: Any Vapour Control Layer (VCL) needs to be a well-sealed continuous layer. Care should be taken to seal all laps, penetrations, perimeters, junctions, and accidental punctures. Ensure substrate surfaces are as clean, dry and dust-free as possible before beginning installation.

Weather Conditions: Securing membranes in windy conditions may result in a poor-quality installation. Appropriate precautions should be taken during installation.

Accessories: Procheck FR Tape.
Optional - Probreathe FR Duo Tape for temporary bond to substrate.

Mechanical Fixings: The fire performance of mechanical fixings should be taken into account if required. Place fixings at 1.0m

- 1.5m centres. If blown insulation is to be used, reduce fixing centres to 0.5m - 1.5m.

Penetrations/Opening: VCLs should be cut and neatly formed around openings and penetrations. The membrane should be made air- and vapour-tight by sealing the opening with Procheck FR Tape.

Puncture Damage: For through-membrane punctures, repair with a Procheck A2 patch ensuring the patch extends a minimum of 150mm beyond the puncture edge. Seal patch edges with Procheck FR Tape. For minor scuff-type damage of less than 25mm, Procheck FR Tape may be used alone without a patch.

Delivery & Site Handling: Rolls are supplied to site with a label clearly identifying product name and grade. Rolls should be stored flat or upright on a clean, level surface and kept under cover.

1. Install Procheck A2 so that the reflective printed side (front) is facing the interior of the building.
2. Install horizontally or vertically in an even manner ensuring the membrane is flat against the substrate and without wrinkles. If installing horizontally, work from bottom to top to ensure overlaps are shingled.
3. Vertical and horizontal overlaps should be min. 150mm. Seal overlaps with Procheck FR Tape.
4. Depending on substrate Probreathe FR Duo Tape may be used to temporarily bond the membrane to the substrate. This can either be as full strips or sections, approx 100mm in length, placed at approx 1000mm centres.
5. Primary fixing will be achieved by the internal linings.
6. Mechanical fixings can be used to

temporarily fix the membrane to the substrate. Ensure the fixing is suitable for the substrate and consider use of a wafer or flat head with washer to distribute self weight of the membrane. If installing on a ceiling, either horizontal or inclined, then mechanical fixings, with washer heads, should always be utilised. Use an appropriately fire-rated mechanical fixing as required. Seal over the fixings with Procheck FR Tape for enhanced vapour and air tightness.

7. Seal all edges of overlaps and perimeter with Procheck FR Tape.
8. The VCL can be lapped directly to the subfloor, tied into a VCL along the ceiling or to the airtight layer between floors in multi-storey dwellings. If in doubt, please send a detail to the Technical Department for assistance.

Dimensions:

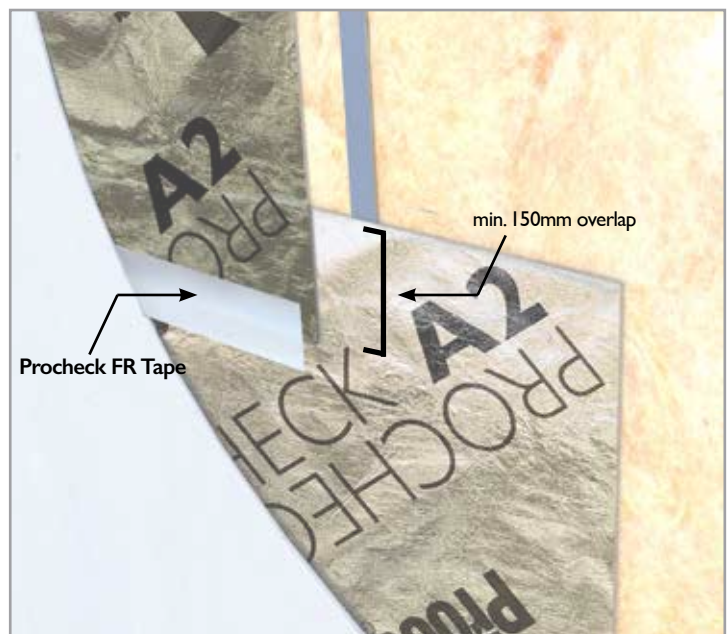
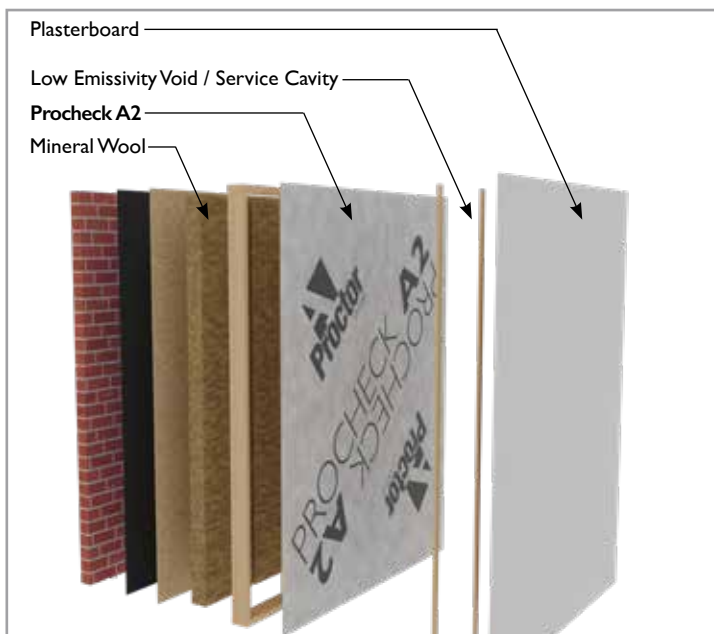
Procheck A2	1.2m x 50m
Procheck FR Tape	75mm x 25m
Probreathe FR Duo Tape	50mm x 50m



Procheck A2: front (L) & reverse (R) sides



Procheck FR Tape



Disclaimer

The contents of this installation guide are provided by A. Proctor Group Limited (APG) in good faith for general information purposes only. The statements and data contained in this guide are not specific technical recommendations as to any particular design or application. APG give no warranty and accept no liability for its contents and the ultimate determination as to product suitability is the sole responsibility of the installer or end user. APG strongly recommends following the installation guidelines and the relevant Codes of Practice which are correct at the time of publication and results may vary depending on the particular design/and or application.



Revised: January 2025

Version: 1.003

Next review due: January 2026

TECHNICAL ADVICE

The A. Proctor Group has a dedicated Technical Department which can deal with installation details, view drawings for approval and give specialist advice on the correct use of the A. Proctor Group products.

Telephone: +44 (0)1250 872 261
 Facimile: +44 (0)1250 872 727
 email: contact@proctorgroup.com
www.proctorgroup.com

AIRTIGHTNESS
 FIRE SOLUTIONS
 ACOUSTIC SOLUTIONS
 CONDENSATION CONTROL
 THERMAL SOLUTIONS
 GROUND GAS PROTECTION