

# Protech VOC Flex Starter Band

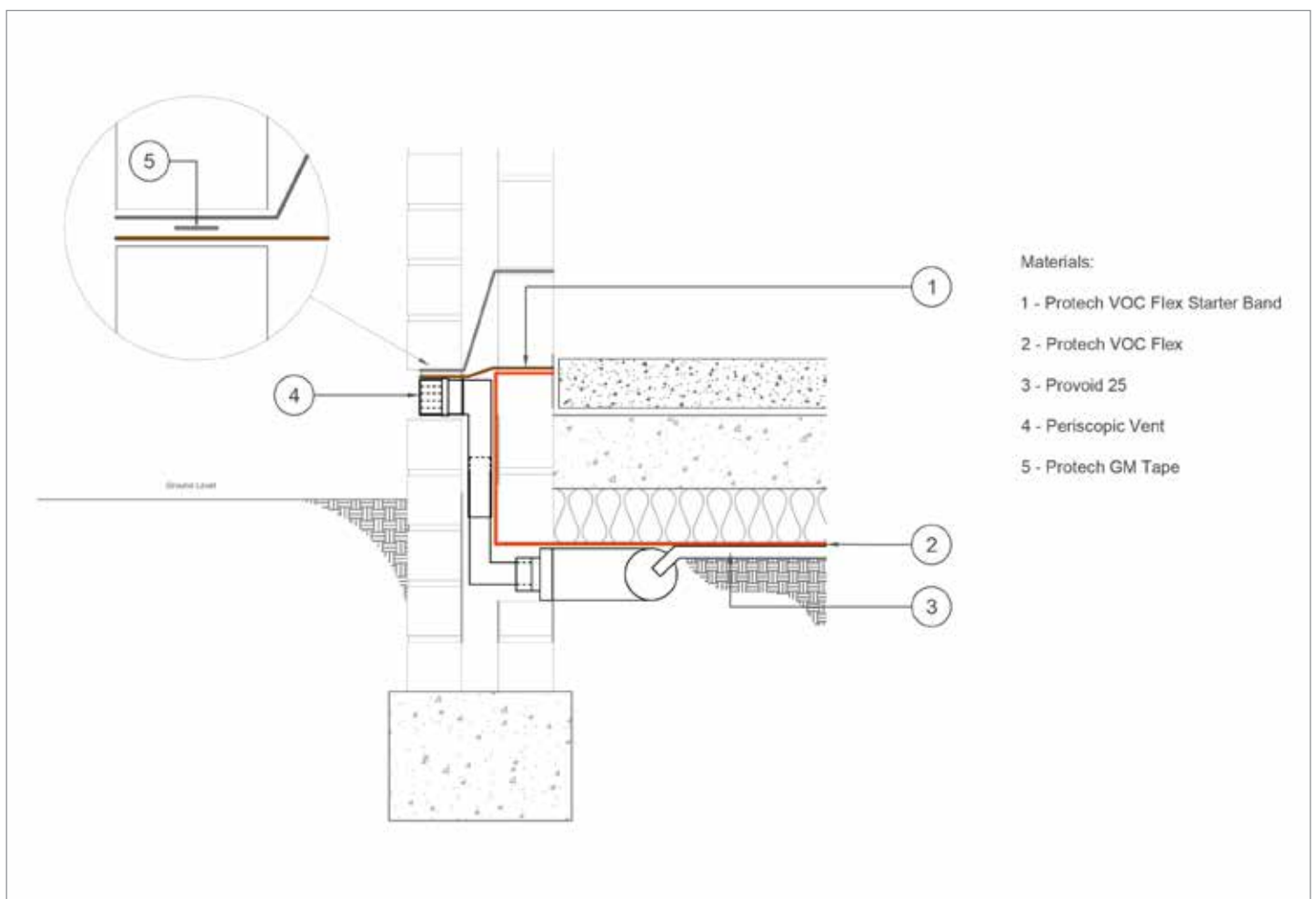
GAS PROTECTION

## DESCRIPTION

The Protech VOC Flex Starter Band has a dual function, to provide a continuous barrier to gas which is then linked in with the horizontal gas membrane and it will also function as a DPC within the wall.

The Starter Band goes through the cavity with an architectural DPC or cavity tray which should be fixed with Protech GMTape in order to stop a creation of a slip plane.

On a solid wall internal wall construction there is no requirement for any additional DPC or protection to the Starter Band. When used in a cavity wall a separate cavity tray or architectural DPC is recommended to protection the spanning section of the Starter Band from damage from mortar spots and other debris created during construction. This cavity tray would be installed in the same course and fixed to Protech GMTape again to prevent a creation of a slip plane.



Download a full Gas Protection brochure from our website...

[www.proctorgroup.com](http://www.proctorgroup.com)



contact@proctorgroup.com | +44 (0) 1250 872261

Revised August 2017

**Proctor**  
Group