

# Proctorwrap®

## CONDENSATION CONTROL

### DESCRIPTION

Proctorwrap is a spunbonded polypropylene film laminate material developed primarily as a breather membrane for use in timber frame wall and light steel frame applications. Applied in the factory during manufacture or on site, Proctorwrap affords effective protection of timber frames during construction against wind-driven rain, snow and dust. Once completed, the high water vapour permeability of Proctorwrap allows the controlled escape of vapour from within the timber frame whilst restricting the ingress of rain and moisture.

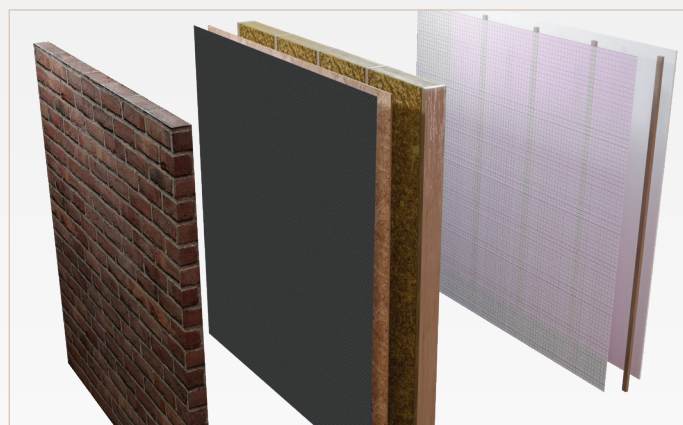
Proctorwraps' vapour resistance of  $S_d$  0.02m is less than the maximum permitted in NHBC requirements. Used in accordance with this NHBC Practice Note, Proctorwrap provides a quality permanent wall breather membrane.

Proctorwrap is suitable for use in exposed areas such as coastal areas due to its' increased WI resistance. This allows the use of Proctorwrap in walls in all areas of the UK.

### WALL BREATHER MEMBRANE

Proctorwrap is produced by the continuous extrusion of polypropylene fibres which are then spun and bonded together with a combination of heat and pressure. These two layers protect a internal vapour permeable layer which gives the product increased water resistance and airtightness.

Proctorwrap complies with the requirements of BS EN 13859-2.



### CHARACTERISTICS

Thickness	0.4 mm
Weight	100 g/m <sup>2</sup>
Roll Length	100m
Roll Width	2.7m or 1.35m (Grey only)
Colour	Grey / Blue Others Available

### KEY BENEFITS

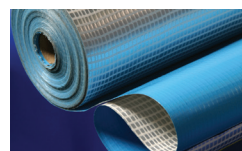
- Increased airtightness over other breather membranes
- WI water penetration
- Allows temporary protection until primary external covering is installed / applied
- Provides a reduced risk of tears and subsequent remedial work
- Airtight and vapour permeable
- BBA Certificate No. 24/7181

### COMPLEMENTARY PRODUCTS



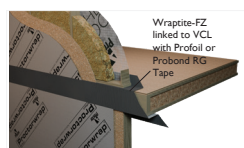
#### Wraptite Tape

Air tightness tape, tear resistant with high vapour permeability for internal and external applications. Fully bonds to all standard substrates.



#### Vapour Control Layer

Reinforced polythene and polythene/foil VCLs



#### Wraptite-FZ

Vapour permeable air barrier membrane for use at floor junctions.



## PHYSICAL PROPERTIES

Property		Test Method	Mean Results	
		BS EN 13859-2:2010		
Vapour Resistance		BS 3177 EN ISO 12572 (Sd)	0.1MNs/g 0.02m	
Colour		Various		
Mass per unit area		EN 1849-2	100g/m <sup>2</sup>	
Reaction to Fire		EN 13501-1	Class E	
Water penetration	Before ageing:	EN 1928	Class W1	
	After ageing:		Class W1	
Tensile Strength	Before ageing:	EN 12311-1	MD 240N	CD 125N
	After ageing:		MD 200N	CD 110N
Elongation	Before ageing:	EN 12311-1	MD 60%	CD 70%
	After ageing:		MD 50%	CD 90%
Tear resistance		EN 12310-1	MD 100N	CD 125N
Flexibility at low temperature		EN 1109	No cracking at minus $\geq 40^{\circ}\text{C}$	

## APPLICATION DETAILS

Supplied in roll form, Proctorwrap should be fixed to frames with austenitic stainless steel nails or staples at centres no more than 500mm. On areas where sheets are required to be lapped, the following dimensions must be adhered to:

Vertical Laps - not less than 150mm

Horizontal laps - not less than 100mm

Ensure integrity of Proctorwrap by overlapping upper layers over lower layers and staggering vertical joints. Protect timber at wall plate level and mark stud positions for wall tie fixings. Once applied to the wall, Proctorwrap should be covered within 3 months.

Proctorwrap must be installed in accordance with the manufacturer's instructions and recommendations.

Quality control checks are carried out on the incoming materials, during production and on the finished product.

**Quality control checks on the finished product include:**

- Weight
- Tensile strength & elongation
- Tear
- Water resistance



Download a full brochure  
from our website...

[www.proctorgroup.com](http://www.proctorgroup.com)

Revised: July 2025  
Version: 1.006  
Next review due: July 2026

