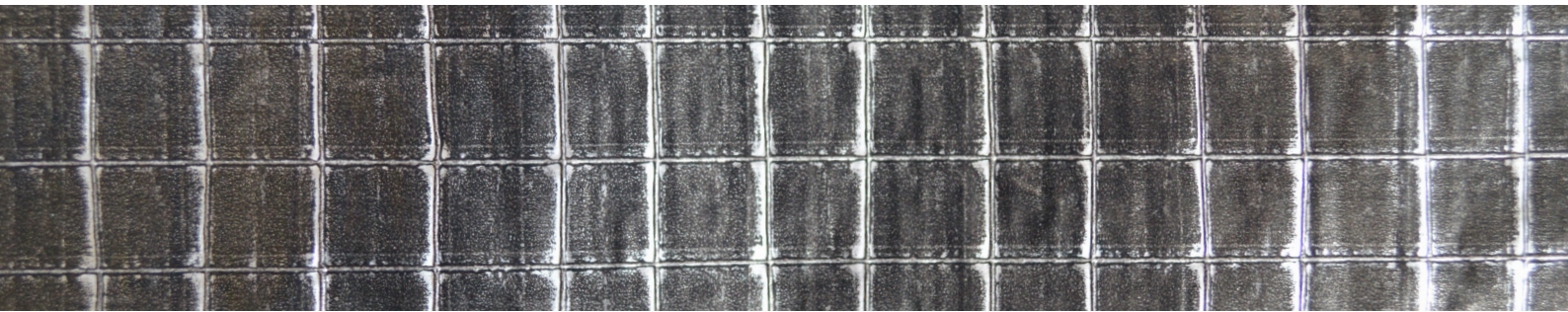


# PROCHECK® FR200

## user guide



### PROCHECK FR200

Procheck FR200 has a reaction to fire classification of B-s1,d0 which provides assurance of fire performance to the structure. Procheck FR200 air and vapour tight membrane improves energy efficiency and reduces condensation risk.

- Independent assurance of fire performance (EN 13501-1 Class B, s1-d0)
- Improved energy efficiency
- Reduced condensation risk
- Reinforced to withstand tough site conditions

#### Installation of Procheck FR200

**Attention to Detail:** Any Vapour Control Layer (VCL) needs to be a well-sealed continuous layer. Care should be taken to seal all laps, penetrations, perimeters, junctions, and accidental punctures. Ensure substrate surfaces are as clean, dry and dust-free as possible before beginning installation.

**Weather Conditions:** Securing lightweight membranes in windy conditions may result in a poor-quality installation. Appropriate precautions should be taken during installation.

**Accessories:** Procheck FR Tape

**Mechanical Fixings:** The fire performance of mechanical fixings should be taken into account if required. See Table 1 for suggested mechanical fixing options according to the substrate. Place fixings at 1000mm centres. If blown insulation is to be used, reduce fixing centres to 500mm.

**Penetrations/Opening:** VCLs should be cut and neatly formed around openings and penetrations. The membrane should be made air- and vapour-tight by sealing the opening with

Procheck FR Tape.

**Puncture Damage:** For through-membrane punctures, repair with a Procheck FR200 patch ensuring the patch extends a minimum of 150mm beyond the puncture edge. Seal patch edges with Procheck FR Tape. For minor scuff-type damage of less than 25mm, Procheck FR Tape may be used alone without a patch.

**Delivery & Site Handling:** Rolls are supplied to site with a label clearly identifying product name and grade. Rolls should be stored flat or upright on a clean, level surface and kept under cover.

1. Install Procheck FR200 so that the black laquered side (front) is facing in the direction of the potential fire risk.
2. Install horizontally or vertically in an even manner ensuring the membrane is flat against the substrate and without wrinkles. If installing horizontally, work from bottom to top to ensure overlaps are shingled.

3. Vertical and horizontal overlaps should be min. 150mm. Seal over edge of lap joints with Procheck FR Tape.
4. Use mechanical fixings to permanently attach the membrane to the underlying substrate/stud/fixing rail. Use an appropriately fire-rated mechanical fixing as required. Seal over the fixings with Procheck FR Tape for enhanced vapour and air tightness.
5. Seal all edges of overlaps and perimeter with Procheck FR Tape.
6. The VCL can be lapped directly to the subfloor; tied into a VCL along the ceiling or to the airtight layer between floors in multi-storey dwellings. If in doubt, please send a detail to the Technical Department for assistance.

#### Dimensions:

**Procheck FR200**

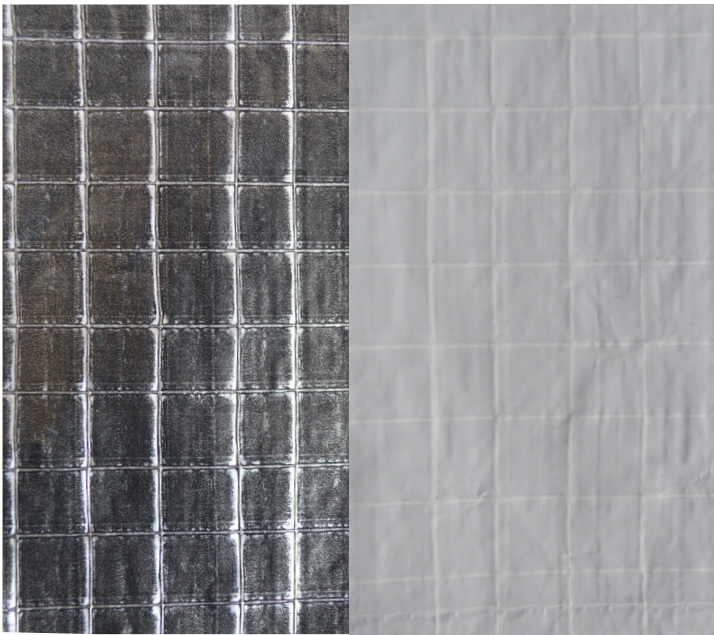
1.6m x 50m

**Procheck FR Tape**

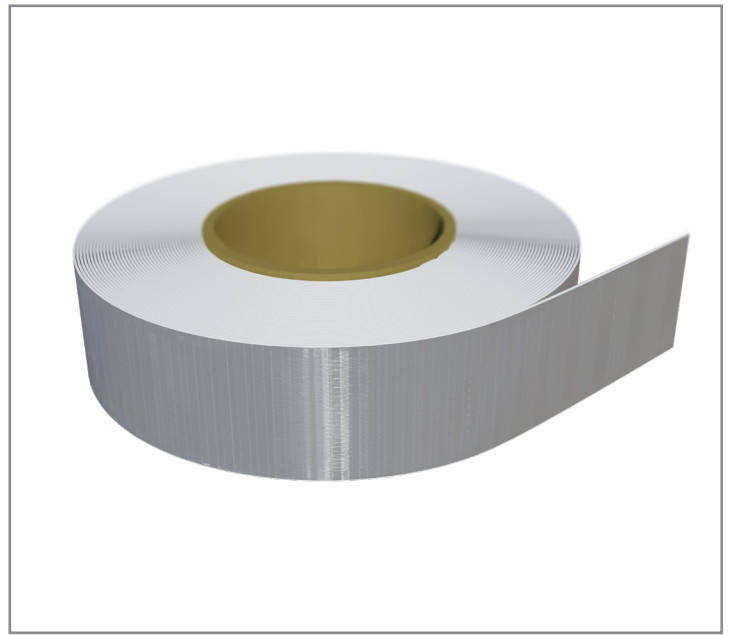
75mm x 25m

Table 1

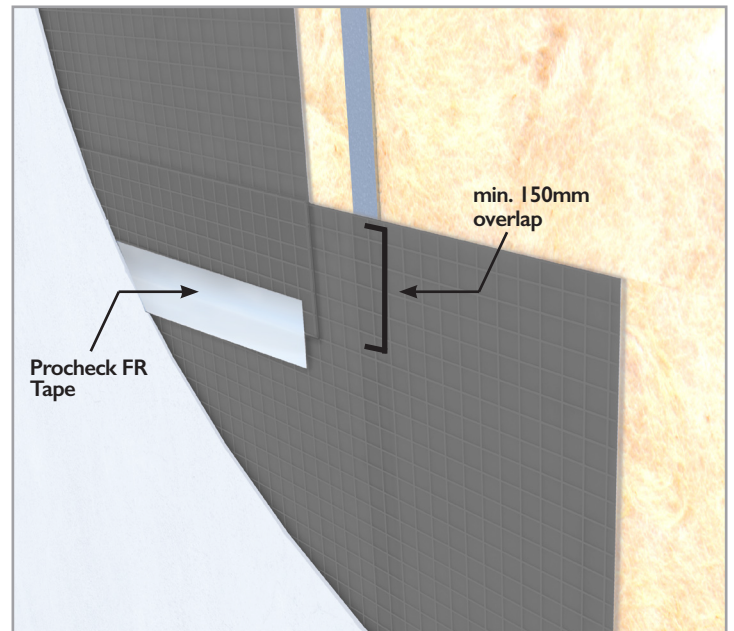
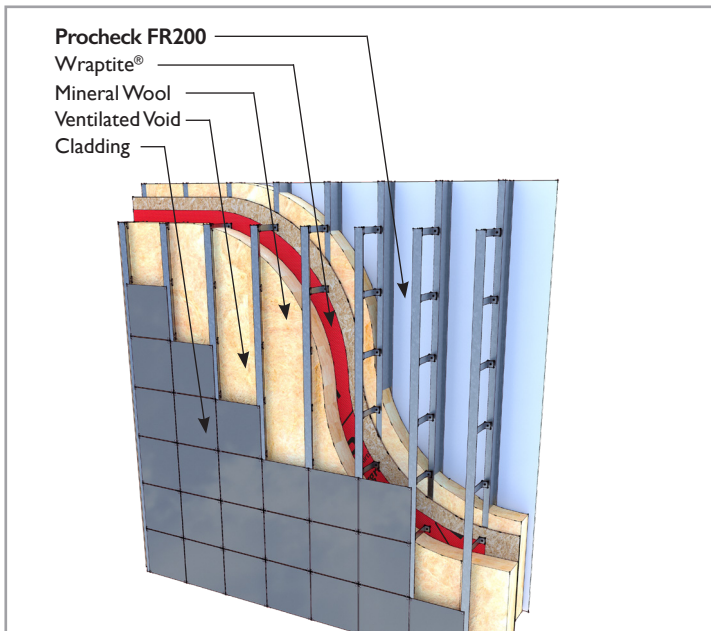
Substrate	Fixing Suggestions (others available)
Concrete	4H 32 15 EJOT
RCMY-Wall (steel frame behind)	JT3-3-5.5 x 35 S6 EJOT
RCMY-Wall (concrete behind)	4H 45 15 EJOT
Powder Coated Aluminium to Steel	JT3-3-5.5 x 35 S16 EJOT JT3-3-5.5 x 35 S19 EJOT
Powder Coated Aluminium to Concrete	4H 45 15 EJOT



Procheck FR200: front (L) & reverse (R) sides



Procheck FR Tape



**Disclaimer**

The contents of this installation guide are provided by A. Proctor Group Limited (APG) in good faith for general information purposes only. The statements and data contained in this guide are not specific technical recommendations as to any particular design or application. APG give no warranty and accept no liability for its contents and the ultimate determination as to product suitability is the sole responsibility of the installer or end user. APG strongly recommends following the installation guidelines and the relevant Codes of Practice which are correct at the time of publication and results may vary depending on the particular design/and or application.

**TECHNICAL ADVICE**

The A. Proctor Group has a dedicated Technical Department which can deal with installation details, view drawings for approval and give specialist advice on the correct use of the A. Proctor Group products.

Telephone: +44 (0)1250 872 261  
 Facimile: +44 (0)1250 872 727  
 email: [contact@proctorgroup.com](mailto:contact@proctorgroup.com)  
[www.proctorgroup.com](http://www.proctorgroup.com)

ACOUSTIC SOLUTIONS  
 CONDENSATION CONTROL  
 GROUND GAS PROTECTION  
 THERMAL INSULATION