

A Proctor Group Limited

The Haugh
Blairgowrie
Perthshire PH10 7ER

Tel: 01250 872261

e-mail: contact@proctorgroup.com

website: www.proctorgroup.com



Agrément Certificate

25/7384

Product Sheet 1 Issue 1

THE A PROCTOR GROUP VAPOUR PERMEABLE MEMBRANES

PROBREATHE A2

This Agrément Certificate Product Sheet⁽¹⁾ relates to Probreathe A2, for use as an airtight breather membrane for use on external walls of timber-frame, steel-frame, and masonry constructions.

(1) Hereinafter referred to as 'Certificate'.

The assessment includes

Product factors:

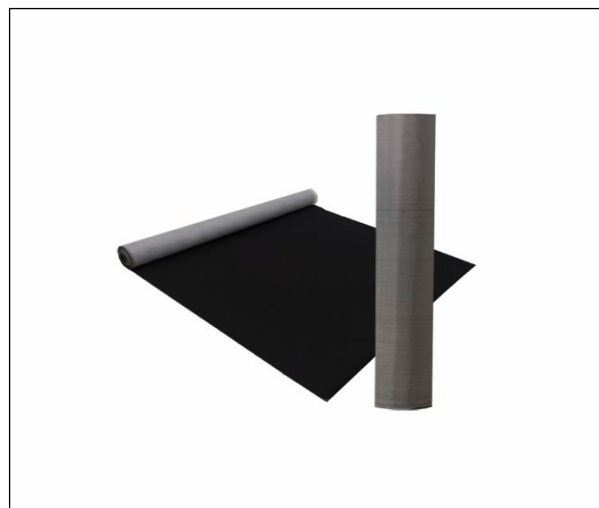
- compliance with Building Regulations
- compliance with additional regulatory or non-regulatory information where applicable
- evaluation against technical specifications
- assessment criteria and technical investigations
- uses and design considerations

Process factors:

- compliance with Scheme requirements
- installation, delivery, handling and storage
- production and quality controls
- maintenance and repair

Ongoing contractual Scheme elements†:

- regular assessment of production
- formal 3-yearly review



KEY FACTORS ASSESSED

- Section 1. Mechanical resistance and stability
- Section 2. Safety in case of fire
- Section 3. Hygiene, health and the environment
- Section 4. Safety and accessibility in use
- Section 5. Protection against noise
- Section 6. Energy economy and heat retention
- Section 7. Sustainable use of natural resources
- Section 8. Durability

The BBA has awarded this Certificate to the company named above for the product described herein. This product has been assessed by the BBA as being fit for its intended use provided it is installed, used and maintained as set out in this Certificate.

On behalf of the British Board of Agrément

Date of issue: 2 June 2025

Hardy Giesler
Chief Executive Officer

This BBA Agrément Certificate is issued under the BBA's Inspection Body accreditation to ISO/IEC 17020. Sections marked with † are not issued under accreditation.

The BBA is a UKAS accredited Inspection Body (No. 4345), Certification Body (No. 0113) and Testing Laboratory (No. 0357).

Readers MUST check that this is the latest issue of this Agrément Certificate by either referring to the BBA website or contacting the BBA directly.

The Certificate should be read in full as it may be misleading to read clauses in isolation.

Any photographs are for illustrative purposes only, do not constitute advice and should not be relied upon.

British Board of Agrément

1st Floor, Building 3, Hatters Lane
Croxley Park, Watford
Herts WD18 8YG

©2025

tel: 01923 665300
clientservices@bbacerts.co.uk
www.bbacerts.co.uk

SUMMARY OF ASSESSMENT AND COMPLIANCE

This section provides a summary of the assessment conclusions; readers should refer to the later sections of this Certificate for information about the assessments carried out.

Compliance with Regulations

Having assessed the key factors, the opinion of the BBA is that Probreathe A2, if installed, used and maintained in accordance with this Certificate, can satisfy or contribute to satisfying the relevant requirements of the following Building Regulations:



The Building Regulations 2010 (England and Wales) (as amended)

Requirement:	B3(4)	Internal fire spread (structure)
Comment:		The product can contribute to satisfying this Requirement. See section 2 of this Certificate.
Requirement:	B4(1)	External fire spread
Comment:		The product may be restricted by this Requirement. See section 2 of this Certificate.
Requirement:	C2(b)	Resistance to moisture
Comment:		The product is restricted by this Requirement. See section 3 of this Certificate.
Requirement:	C2(c)	Resistance to moisture
Comment:		The product can contribute to satisfying this Requirement. See section 3 of this Certificate.
Requirement:	L1(a)(i)	Conservation of fuel and power
Comment:		The product can contribute to satisfying this Requirement. See sections 3 and 6 of this Certificate.
Regulation:	7(1)	Materials and workmanship
Comment:		The product is acceptable. See sections 8 and 9 of this Certificate.
Regulation:	25B	Nearly zero-energy requirements for new buildings
Regulation:	26	CO₂ emission rates for new buildings
Regulation:	26A	Fabric energy efficiency rates for new dwellings (applicable to England only)
Regulation:	26A	Primary energy rates for new buildings (applicable to Wales only)
Regulation:	26B	Fabric performance values for new dwellings (applicable to Wales only)
Regulation:	26C	Target primary energy rates for new buildings (applicable to England only)
Regulation:	26C	Energy efficiency rating (applicable to Wales only)
Comment:		The product can contribute to satisfying these Regulations. See section 6 of this Certificate.



The Building (Scotland) Regulations 2004 (as amended)

Regulation:	8(1)	Fitness and durability of materials and workmanship
Comment:		The product can contribute to a construction satisfying this Regulation. See sections 8 and 9 of this Certificate.
Regulation:	9	Building standards - construction
Standard:	2.4	Cavities
Comment:		The product can contribute to satisfying this Standard with respect to clause 2.4.2 ⁽¹⁾⁽²⁾ . See section 2 of this Certificate.
Standard:	3.10	Precipitation
Comment:		The product is restricted by this Standard with respect to clauses 3.10.1 ⁽¹⁾⁽²⁾ and 3.10.4 ⁽¹⁾⁽²⁾ . See section 3 of this Certificate.

Standard:	3.15	Condensation
Comment:		The product can contribute to satisfying this Standard, with reference to clauses 3.15.1 ⁽¹⁾⁽²⁾ and 3.15.5 ⁽¹⁾⁽²⁾ . See section 3 of this Certificate.
Standard:	6.1(b)(c)	Energy demand
Standard:	6.2	Building insulation envelope
Comment:		The product can contribute to minimising heat loss at lintels, jambs and sills, with reference to clauses 6.1.1 ⁽¹⁾ , 6.2.4 ⁽¹⁾ and 6.2.5 ⁽²⁾ of these Standards. See sections 3 and 6 of this Certificate.
Standard:	7.1(a)(b)	Statement of sustainability
Comment:		The product can contribute to meeting the relevant requirements of Regulation 9, Standards 1 to 6 and therefore will contribute to a construction meeting a bronze level of sustainability as defined in this Standard. In addition, the product can contribute to a construction meeting a higher level of sustainability as defined in this Standard, with reference to clauses 7.1.4 ⁽¹⁾ , 7.1.6 ⁽¹⁾⁽²⁾ , 7.1.7 ⁽¹⁾ , 7.1.9 ⁽²⁾ and 7.1.10 ⁽²⁾ . See sections 3 and 6 of this Certificate.
Regulation:	12	Building standards - conversion
Comment:		Comments in relation to the product under Regulation 9, Standards 1 to 6 also apply to this Regulation, with reference to clause 0.12.1 ⁽¹⁾⁽²⁾ and Schedule 6 ⁽¹⁾⁽²⁾ .
(1) Technical Handbook (Domestic).		
(2) Technical Handbook (Non-Domestic).		



The Building Regulations (Northern Ireland) 2012 (as amended)

Regulation:	23(1)(a)(i)	Fitness of materials and workmanship
Comment:	(iii)(b)(i)(ii)	The product is acceptable. See sections 8 and 9 of this Certificate.
Regulation:	28(b)	Resistance to moisture and weather
Comment:		The product is restricted by this Regulation. See section 3 of this Certificate.
Regulation:	29	Condensation
Comment:		The product can contribute to satisfying this Regulation. See section 3 of this Certificate.
Regulation:	35(4)	Internal fire spread - structure
Comment:		The product can contribute to satisfying this Regulation. See section 2 of this Certificate.
Regulation:	36(a)	External fire spread
Comment:		The product may be restricted by this Regulation. See section 2 of this Certificate.
Regulation:	39(a)(i)	Conservation measures
Regulation:	40(2)	Target carbon dioxide emission rate
Regulation:	43(1)(2)	Renovation of thermal elements
Regulation:	43B	Nearly zero-energy requirements for new buildings
Comment:		The product can contribute to satisfying these Regulations. See sections 3 and 6 of this Certificate.

Additional Information

NHBC Standards 2025

In the opinion of the BBA, Probreathe A2, if installed, used and maintained in accordance with this Certificate, can satisfy or contribute to satisfying the relevant requirements in relation to *NHBC Standards*, Chapters 6.1 *External masonry walls*, 6.2 *External timber framed walls* and 6.10 *Light steel framed walls and floors*.

Fulfilment of Requirements

The BBA has judged Probreathe A2 to be satisfactory for use as described in this Certificate. The product has been assessed as an airtight breather membrane for use on external walls of timber-frame, steel-frame and masonry constructions.

ASSESSMENT

Product description and intended use

The Certificate holder provided the following description for the product under assessment. Probreathe A2 is a woven glass fibre membrane with a Polyurethane coating.

The product has the nominal characteristics given in Table 1.

Table 1 Nominal characteristics

Characteristic (unit)	Value
Thickness (mm)	0.20
Mass per unit area ($\text{g}\cdot\text{m}^{-2}$)	230
Roll length (m)	50
Roll width (m)	1.5
Colour	
Upper face	Black
Lower face	Grey

Ancillary Items

The following ancillary items are essential to use with the product and have been assessed with the product:

- Probreathe FR Duo Tape (50 mm x 50 m) — a double-sided adhesive tape used to bond and attach the membrane to the substrate
- Probreathe FR Tape (75 mm x 25 m) — a single-sided adhesive tape used to seal membrane overlaps, mechanical fixings and penetrations

Definitions for products and applications inspected

In the absence of other guidance, suitable timber-frame, steel-frame and masonry walls are defined as those designed and built in accordance with *NHBC Standards 2025*, Chapters 6.1, 6.2 and 6.10.

Product assessment – key factors

The product was assessed for the following key factors, and the outcome of the assessments is shown below. Conclusions relating to the Building Regulations apply to the whole of the UK unless otherwise stated.

1 Mechanical resistance and stability

Data were assessed for the following characteristics.

1.1 Resistance to mechanical damage

1.1.1 Results of resistance to mechanical damage tests are given in Table 2.

Table 2 Resistance to mechanical damage

Product assessed	Assessment method	Requirement	Result
Probreathe A2	Nail tear to STN EN 12310-2 : 2002 with modifications in accordance to BS EN 13859-2 : 2014, Annex B Longitudinal direction Transverse direction	≥ 50 N	Pass
			Pass
	Tensile strength to STN EN 12311-1 : 2002 with modifications in accordance to EN 13859-2 : 2014, Annex A Longitudinal direction Transverse direction	Value achieved	4225 N·(50 mm) ⁻¹
			3111 N·(50 mm) ⁻¹
	Elongation to STN EN 12311-1 : 2002 with modifications in accordance to EN 13859-2 : 2014, Annex A Longitudinal direction Transverse direction	Value achieved	6%
			5%

1.1.2 On the basis of data assessed, the product has adequate strength to resist the loads associated with construction and installation.

2 Safety in case of fire

Data were assessed for the following characteristic.

2.1 Reaction to fire

2.1.1 The result of reaction to fire tests is given in Table 3.

Table 3 Reaction to fire

Product assessed	Assessment method	Requirement	Result
Probreathe A2 with horizontal joints bonded with Probreathe FR Duo Tape and vertical joints sealed with Probreathe FR Tape	EN 13501-1 : 2018 ⁽¹⁾	Value achieved	Class A2-s1, d0 ⁽²⁾⁽³⁾⁽⁴⁾

(1) Classification report FIRES-CR-290-21-AUPE Edition 2, issued by FIRES, s.r.o., copies available from the Certificate holder on request.

(2) Classification is valid for use with or without substrate of Euroclasses A2-s1, d0 in accordance with BS EN 13501-1 : 2018

(3) Classification is valid for use for products mechanically fixed or free lay down

(4) Classification is valid for use for products used with or without air gap between substrate and product.

2.1.2 On the basis of data assessed, constructions including Probreathe A2 and satisfying the requirements of section 2.1.1 will be unrestricted in terms of height and proximity to a relevant boundary by the documents supporting the national Building Regulations.

2.1.3 This performance may not be achieved by other combinations of materials, and the classification and permissible areas of use of these must be established in accordance with the requirements of the documents supporting the national Building Regulations.

2.2 Designers must refer to the relevant national Building Regulations and guidance for alternative approaches and detailed conditions of use, particularly in respect of requirements for cavity closers and barriers, fire stopping of service penetrations and combustibility limitations for other materials and components used in the overall wall construction.

3 Hygiene, health and the environment

Data were assessed for the following characteristics.

3.1 Weathertightness

3.1.1 Results of weathertightness tests are given in Table 4.

Table 4 Weathertightness

Product assessed	Assessment method	Requirement	Result
Probreathe A2	Resistance to water penetration to STN EN 13111 : 2010	Volume of water penetration through the specimen is less than 100 ml	Pass
Probreathe A2 with Probreathe FR Duo Tape on plywood substate	Peel from substrate to MOAT 66 : 4.3.3 : 2001	$\geq 25 \text{ N} \cdot (50 \text{ mm})^{-1}$	Pass

3.1.2 On the basis of data assessed, the product is Class W2 in accordance with BS EN 13859-2 : 2014 and will resist liquid water penetration and wind-blown rain and snow and protect the sheathing and frame from external moisture.

3.1.3 The product is not suitable for use in very severe exposure to driving rain conditions⁽¹⁾.

(1) Areas of the United Kingdom affected by very severe exposure to driving rain conditions are defined in Approved Document C, Diagram 12.

3.1.4 The product resists penetration of liquid water and consequently can be used as temporary weather protection during construction, prior to the completion of external brickwork or cladding. The period of such use must, however, be kept to a minimum. Advice must be sought from the Certificate holder, but such advice is outside of the scope of this Certificate.

3.2 Condensation

3.2.1 The result of water vapour resistance tests is given in Table 5.

Table 5 Water vapour resistance⁽¹⁾

Product assessed	Assessment method	Requirement	Result
Probreathe A2	Water vapour diffusion - equivalent air layer thickness (s_d) to STN EN ISO 12572 : 2017	$< 0.12 \text{ m}$	Pass

(1) Water vapour resistance may be taken as $5 \times s_d$ value.

3.2.2 On the basis of the data assessed the water vapour resistance of the product is less than $0.6 \text{ MN} \cdot \text{s} \cdot \text{g}^{-1}$, and it is classified as a breather membrane in accordance with BS 5250 : 2021. It will, therefore, contribute towards minimising the risk of interstitial condensation in walls designed and constructed in accordance with BS 5250 : 2021.

3.3 Airtightness

3.3.1 The results of airtightness tests are given in Table 6.

Table 6 Airtightness

Product assessed	Assessment method	Requirement	Result
Probreathe A2	Airtightness of membrane to EN 12114 : 2000	$\leq 30 \text{ m}^3 \cdot \text{m}^{-2} \cdot \text{h}^{-1} (50 \text{ Pa})^{-1}$	Pass
Probreathe A2 with Probreathe FR Duo Tape	Airtightness of joint to BS EN 12114 : 2000	No leakage	Pass

3.3.2 On the basis of data assessed, the product, with joints sealed using Probreathe FR Duo Tape, can have a satisfactory resistance to air movement.

3.3.3 When used around windows and doors, the product must be used in conjunction with a sealing system to maintain airtightness of the construction. The Certificate holder's advice must be sought on suitable sealing systems, but such advice is outside the scope of this Certificate.

4 Safety and accessibility in use

Not applicable.

5 Protection against noise

Not applicable.

6 Energy economy and heat retention

Data were assessed for the following characteristics.

6.1 Thermal performance

After lapped, fixed and taped correctly, the product acts as an air barrier and can contribute to elements and junctions minimising heat loss by unplanned air infiltration and exfiltration. Guidance in this respect can be found in the documents supporting the national Building Regulations.

7 Sustainable use of natural resources

Not applicable.

8 Durability

8.1 The potential mechanisms for degradation and the known performance characteristics of the materials in the product were assessed.

8.2 Specific test data were assessed as given in Table 7.

Table 7 Durability

Product assessed	Assessment method	Requirement	Result
Probreathe A2	Dimensional stability to BS EN 1107-2 : 2001	≤ 2%	
	Longitudinal direction		Pass
	Transverse direction		Pass
	Tensile strength to STN EN 12311-1 : 2000 with modifications in accordance to EN 13859-2 : 2014, Annex A and aged in accordance with Annex C	Change < 30%	
	Longitudinal direction		Pass
	Transverse direction		Pass
	Elongation to STN EN 12311-1 : 2000 with modifications in accordance to EN 13859-2 : 2014, Annex A and aged in accordance with Annex C	Change < 30%	
	Longitudinal direction		Pass
	Transverse direction		Pass
	Resistance to water penetration to STN EN 13111 : 2010 And aged in accordance with EN 13859 - 2 : 2014, Annex C	Value achieved	W2

8.3 Service life

8.3.1 Under normal service conditions, the product will have a life equivalent to the structure in which it is incorporated, provided it is designed, installed and maintained in accordance with this Certificate and the Certificate holder's instructions.

8.3.2 The exposure of the product prior to installation of the external cladding must be kept to a minimum. Advice must be sought from the Certificate holder, but such advice is outside the scope of this Certificate.

PROCESS ASSESSMENT

Information provided by the Certificate holder was assessed for the following factors:

9 Design, installation, workmanship and maintenance

9.1 Design

9.1.1 The design process was assessed by the BBA and the following requirements apply in order to satisfy the performance assessed in this Certificate.

9.1.2 The product can be damaged by high winds, careless handling or vandalism and must not be left exposed for longer than is necessary prior to the completion of external brickwork or claddings.

9.1.3 The risk of condensation occurring within the wall of a building will depend upon the properties and vapour resistance of other materials used in the construction, the internal and external conditions and the effectiveness of the air and vapour control layer (AVCL).

9.2 Installation

9.2.1 Installation instructions provided by the Certificate holder were assessed and judged to be appropriate and adequate.

9.2.2 Installation must be carried out in accordance with this Certificate and the Certificate holder's instructions, the provisions of this Certificate and the relevant recommendations given in the *NHBC Standards 2025*.

9.2.3 The product must be installed using the Probreathe FR Duo Tape and Probreathe FR Tape.

9.2.4 Surfaces to which the product is applied must be sound, dry, frost-free, smooth and free from dust, silicone, grease and protrusions.

9.2.5 The product is installed with the black side facing outwards to the external environment.

9.2.6 The product must be installed in such a way as to shed water away from the sheathing and below the lowest timber. Upper layers must be lapped over lower layers.

9.2.7 The product must be installed uniformly without pulling to ensure even tension across and along the membrane.

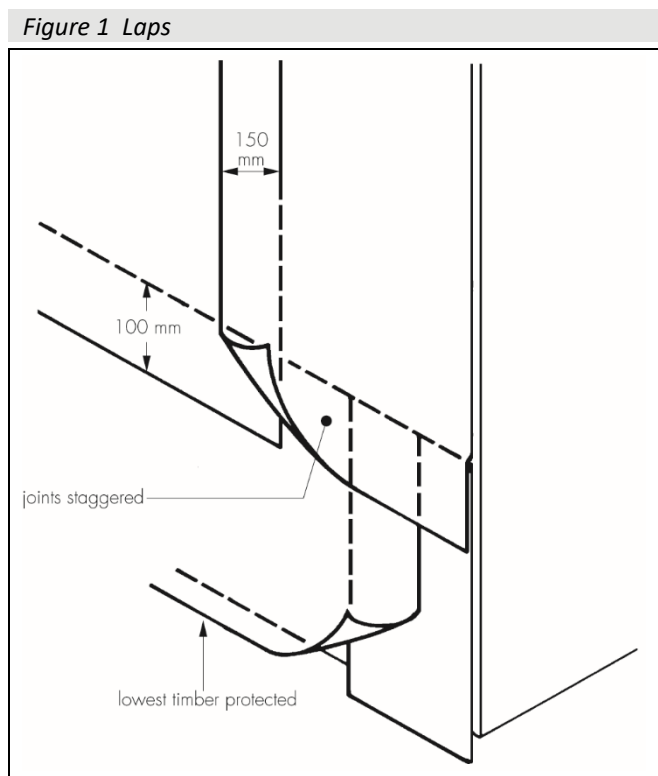
9.2.8 Probreathe FR Duo Tape must be applied to the substrate at 500 mm centres and the perimeter of the membrane.

9.2.9 The release liner of the Probreathe Duo Tape must not be removed until installation.

9.2.10 Even pressure must be applied to the Probreathe FR Duo Tape for bonding to the substrate and Probreathe FR Tape for sealing using a 50 mm roller, see sections 9.2.11 and 9.2.12.

9.2.11 Horizontal laps must be at least 100 mm and vertical laps 150 mm. Vertical laps must be staggered wherever possible (see Figure 1) and sealed using Probreathe FR Tape.

9.2.12 All overlaps must be sealed using the Probreathe FR Tape.



9.2.13 The lowest timbers in the wall must be protected by the product.

9.2.14 The product can be damaged by high winds, careless handling or vandalism and must not be left exposed for longer than is necessary.

9.2.15 Penetrations must be fully sealed with Probreathe FR Tape.

9.3 Workmanship

Practicability of installation was assessed by the BBA, on the basis of the Certificate holder's information. To achieve the performance described in this Certificate, the product must be installed by a competent general builder, or a contractor, experienced with this type of product.

9.4 Maintenance and repair

9.4.1 As the product is confined to the wall and has suitable durability, maintenance is not required.

9.4.2 Damage to the product must be repaired prior to the installation of the external walls or cladding, by laying another sheet over the damaged area and sealing correctly, ensuring water is shed away from the sheathing.

10 **Manufacture**

10.1 The production processes for the product have been assessed, and provide assurance that the quality controls are satisfactory according to the following factors:

10.1.1 The manufacturer has provided documented information on the materials, processes, testing and control factors.

10.1.2 The quality control operated over batches of incoming materials has been assessed and deemed appropriate and adequate.

10.1.3 The quality control procedures and product testing to be undertaken have been assessed and deemed appropriate and adequate.

10.1.4 The process for management of non-conformities has been assessed and deemed appropriate and adequate.

10.1.5 An audit of each production location was undertaken, and it was confirmed that the production process was in accordance with the documented process, and that equipment has been properly tested and calibrated.

† 10.2 The BBA has undertaken to review the above measures on a regular basis through a surveillance process, to verify that the specifications and quality control operated by the manufacturer are being maintained.

11 Delivery and site handling

11.1 The Certificate holder stated that the product is delivered to site in 36 roll pallets bearing the product name, the Certificate holder's name, and batch number.

11.2 Delivery and site handling must be performed in accordance with the Certificate holder's instructions and this Certificate, including:

11.2.1 Rolls must be stored flat or on end, on a level, clean surface, under cover and protected from sunlight.

Supporting information in this Annex is relevant to the products but has not formed part of the material assessed for the Certificate.

Construction (Design and Management) Regulations 2015

Construction (Design and Management) Regulations (Northern Ireland) 2016

Information in this Certificate may assist the client, designer (including Principal Designer) and contractor (including Principal Contractor) to address their obligations under these Regulations.

CE marking

The Certificate holder has taken the responsibility of CE marking the product, in accordance with harmonised European Standard EN 13859-2 : 2010.

Management Systems Certification for production

The management system of the manufacturer has been assessed and registered as meeting the requirements of BS EN ISO 9001: 2015 by BQA Certificates BQA-QMS-C-2017718.

Additional information on installation

Convective water vapour transfer into a wall construction can be reduced by installing a vapour control layer/air barrier behind the internal lining.

Bibliography

BS 5250 : 2021 *Management of moisture in buildings — Code of practice*

BS EN 1107-2 : 2001 *Flexible sheets for waterproofing — Determination of dimensional stability — Plastic and rubber sheets for roof waterproofing*

BS EN 12114 : 2000 *Thermal performance of buildings — Air permeability of building components and building elements. Laboratory test methods*

BS EN 13501-1 : 2007 + A1 : 2009 *Fire classification of construction products and building elements — Classification using test data from reaction to fire tests*

BS EN 13859-2 : 2014 *Flexible sheets for waterproofing — Definitions and characteristics of underlays — Underlays for walls*

BS EN ISO 9001: 2015 *Quality management systems — Requirements*

EN 12114 : 2000 *Thermal performance of buildings — Air permeability of building components and building elements — Laboratory test methods*

EN 13859-2 : 2014 *Flexible sheets for waterproofing — Definitions and characteristics of underlays — Underlays for walls*

EN 13859-2 : 2010 *Flexible sheets for waterproofing — Definitions and characteristics of underlays — Underlays for walls*

EN 13501-1 : 2018 *Fire classification of construction products and building elements — Classification using data from reaction to fire tests*

MOAT 66 : 2001 *UEAtc Technical Guide for the Assessment of Non-Reinforced, Reinforced and/or Backed Roof Waterproofing Systems made of EPDM*

STN EN 12310-2 : 2002 *Flexible sheets for waterproofing. Determination of resistance to tearing (nail shank) — Plastic and rubber sheets for roof waterproofing*

STN EN 12311-1 : 2002 *Flexible sheets for waterproofing — Determination of tensile properties — Bitumen sheets for roof waterproofing*

STN EN 13111 : 2010 *Flexible sheets for waterproofing — Underlays for discontinuous roofing and walls — Determination of resistance to water penetration*

STN EN ISO 12572 : 2017 *Hygrothermal performance of building materials and products — Determination of water vapour transmission properties — Cup method*

Conditions

1 This Certificate:

- relates only to the product that is named and described on the front page
- is issued only to the company, firm, organisation or person named on the front page – no other company, firm, organisation or person may hold or claim that this Certificate has been issued to them
- has to be read, considered and used as a whole document – it may be misleading and will be incomplete to be selective
- is copyright of the BBA
- and any matter arising out of or in connection with it or its subject matter (including non-contractual disputes or claims) is governed by and construed in accordance with the law of England and Wales.
- the courts of England and Wales shall have exclusive jurisdiction to settle any matter arising out of or in connection with this Certificate or its subject matter (including non-contractual disputes or claims).

2 Publications, documents, specifications, legislation, regulations, standards and the like referenced in this Certificate are those that were current and/or deemed relevant by the BBA at the date of issue or reissue of this Certificate.

3 This Certificate will be displayed on the BBA website, and the Certificate Holder is entitled to use the Certificate and Certificate logo, provided that the product and its manufacture and/or fabrication, including all related and relevant parts and processes thereof:

- are maintained at or above the levels which have been assessed and found to be satisfactory by the BBA
- continue to be checked as and when deemed appropriate by the BBA under arrangements that it will determine
- are reviewed by the BBA as and when it considers appropriate.

4 The BBA has used due skill, care and diligence in preparing this Certificate, but no warranty is provided.

5 In issuing this Certificate the BBA is not responsible and is excluded from any liability to any company, firm, organisation or person, for any matters arising directly or indirectly from:

- the presence or absence of any patent, intellectual property or similar rights subsisting in the product or any other product
- the right of the Certificate holder to manufacture, supply, install, maintain or market the product
- actual installations of the product, including their nature, design, methods, performance, workmanship and maintenance
- any works and constructions in which the product is installed, including their nature, design, methods, performance, workmanship and maintenance
- any loss or damage, including personal injury, howsoever caused by the product, including its manufacture, supply, installation, use, maintenance and removal
- any claims by the manufacturer relating to UKCA marking and CE marking.

6 Any information relating to the manufacture, supply, installation, use, maintenance and removal of this product which is contained or referred to in this Certificate is the minimum required to be met when the product is manufactured, supplied, installed, used, maintained and removed. It does not purport in any way to restate the requirements of the Health and Safety at Work etc. Act 1974, or of any other statutory, common law or other duty which may exist at the date of issue or reissue of this Certificate; nor is conformity with such information to be taken as satisfying the requirements of the 1974 Act or of any statutory, common law or other duty of care.